

LOWER MISSISSIPPI RIVER COMPREHENSIVE MANAGEMENT STUDY (LMRCMS)

PUBLIC SCOPING MEETING

Ann Hijuelos, Senior Project Manager
New Orleans District, USACE



US Army Corps
of Engineers®

U.S. ARMY



U.S. ARMY

MEETING PURPOSE



- Provide background information on the Lower Mississippi River Comprehensive Management Study
- Hear your concerns, ideas, and solutions for the management of the Lower Mississippi River, in compliance with the National Environmental Policy Act (NEPA)



PUBLIC MEETINGS

U.S. ARMY

Feb. 27 from 2 to 4 p.m. and 6 to 8 p.m.

- Cairo, IL: Harold S. Jones Fine Arts Center (815 Commercial Ave., Cairo, IL 62914)
- Memphis, TN: Crosstown Community Room (1350 Concourse Avenue, Memphis, TN 38104)
- Bay St. Louis, MS: Hancock County Library (312 Highway 90, Bay St. Louis, MS 39520)

Feb. 28 from 10 a.m. to noon and 6 to 8 p.m.

- Dyersburg, TN: Lannom Center (2000 Commerce Avenue Dyersburg, TN 38024)
- Stoneville, MS: (82 Stoneville Rd, Stoneville, MS 38776)
- New Orleans, LA: USACE New Orleans District Headquarters (7400 Leake Ave., New Orleans, LA 70118)

Feb. 28 from 2 to 4 p.m.

- Cape Girardeau, MO: Cape Girardeau Nature Center (2289 County Park Dr, Cape Girardeau, MO 63701)

Feb. 29 from 2 to 4 p.m. and 6 to 8 p.m.

- Columbus, KY: Columbus-Belmont State Park (350 Park Rd, Columbus, KY 42032)
- Natchez, MS: Co-Lin Multiple Purpose Room (11 Co-Lin Cir, Natchez, MS 39120)
- Belle Chasse, LA: Belle Chasse Auditorium (8398 LA-23 Belle Chasse, LA 70037)

March 4 from 2 to 4 p.m. and 6 to 8 p.m.

- Port Allen, LA: West Baton Rouge Conference Center (2750 North Westport Drive, Port Allen , LA 70767)

March 5 from 2 to 4 p.m. and 6 to 8 p.m.

- Hanville, LA: Emergency Operations Center (15026 River Road, Hanville, LA 70057)

March 7 from 2 to 4 p.m. and 6 to 8 p.m.

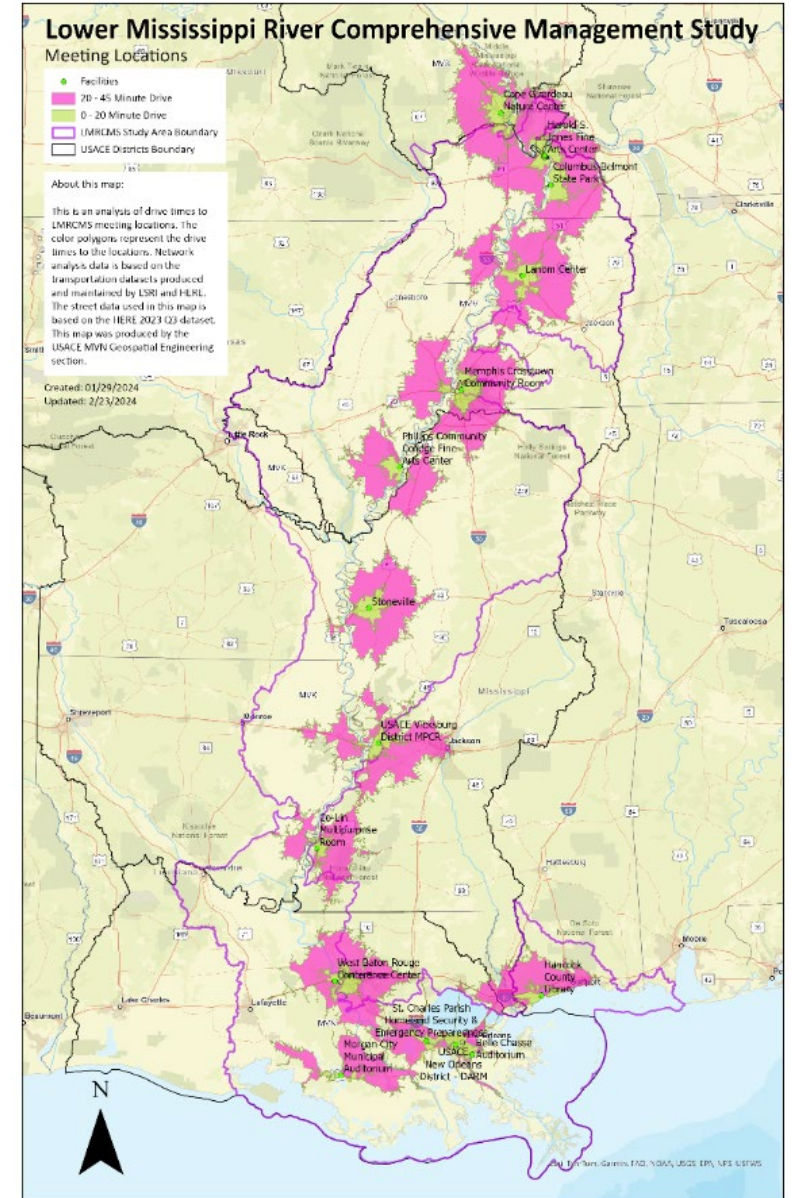
- Helena, AR: Phillips Community College Fine Arts Center (1000 Campus Road, Helena AR 72342)
- Morgan City, LA: Municipal Auditorium, Morgan City, LA (728 Myrtle St., Morgan City, LA 70380)

March 11 from 2 to 4 p.m. and 6 to 8 p.m.

- Vicksburg, MS: USACE Vicksburg District Headquarters (4155 E Clay St, Vicksburg, MS 39183)

March 12, 10 a.m., noon, and 6 p.m., - Virtual Only

- <https://usace1.webex.com/meet/mvnpao>; Meeting number (access code): 1991 65 9004
- By phone: 1-844-800-2712.





U.S. ARMY



WHY ARE WE STUDYING THE MISSISSIPPI RIVER?

Lower Mississippi River Comprehensive Management Study was authorized in Section 213 of the Water Resources Development Act of 2020.

(1) PURPOSE – The Secretary, in collaboration with the heads of other Federal agencies and pursuant to subsection (d)(1)(A), shall conduct a comprehensive study of the Lower Mississippi River basin from Cape Girardeau, Missouri, to the Gulf of Mexico. The study will identify recommendations of actions to be undertaken by the Secretary, under existing authorities or after congressional authorization, for the comprehensive management of the basin for multiple purposes:

- (A) Hurricane and storm damage reduction, flood risk management, structural and nonstructural flood control, and floodplain management strategies;
- (B) Navigation
- (C) Ecosystem and environmental restoration;
- (D) Water supply;
- (E) Hydropower production;
- (F) Recreation; and
- (G) Other purposes as determined by the Secretary.

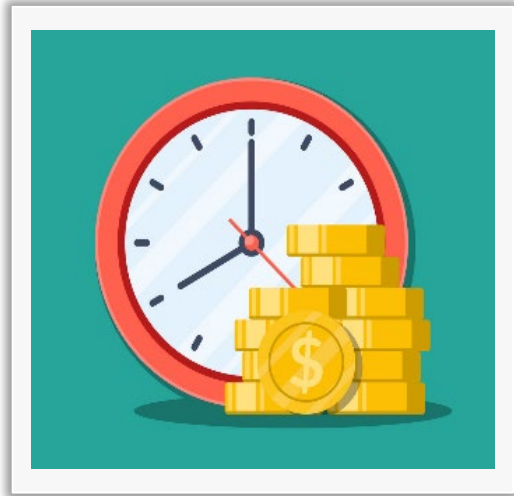


U.S. ARMY

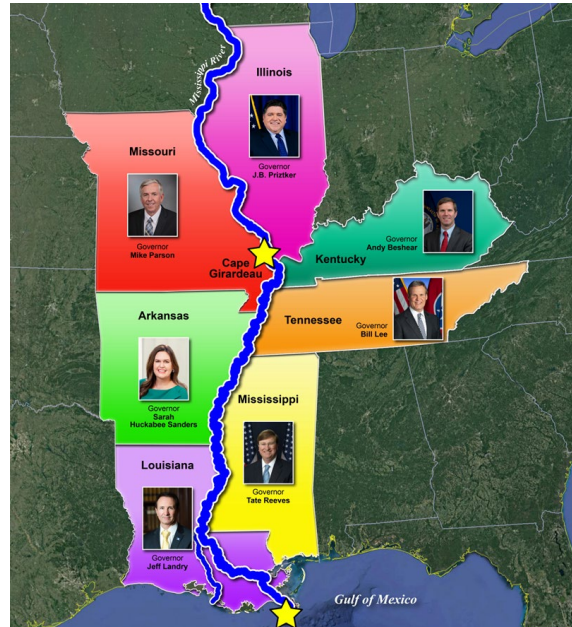


WHY ARE WE STUDYING THE MISSISSIPPI RIVER?

Lower Mississippi River Comprehensive Management Study was authorized in Section 213 of the Water Resources Development Act of 2020.



\$25M
5 Years



7 States
Cape Girardeau, MO to Gulf of Mexico



**Flood Risk, Navigation,
Ecosystem Restoration, Water
Supply, Hydropower, and
Recreational Uses**



U.S. ARMY

WHY ARE WE STUDYING THE MISSISSIPPI RIVER?



Credit: <https://commons.wikimedia.org/wiki/File:Mississippiriver-new-01.png>



WHAT RECOMMENDATIONS MAY COME FROM THE STUDY?



U.S. ARMY

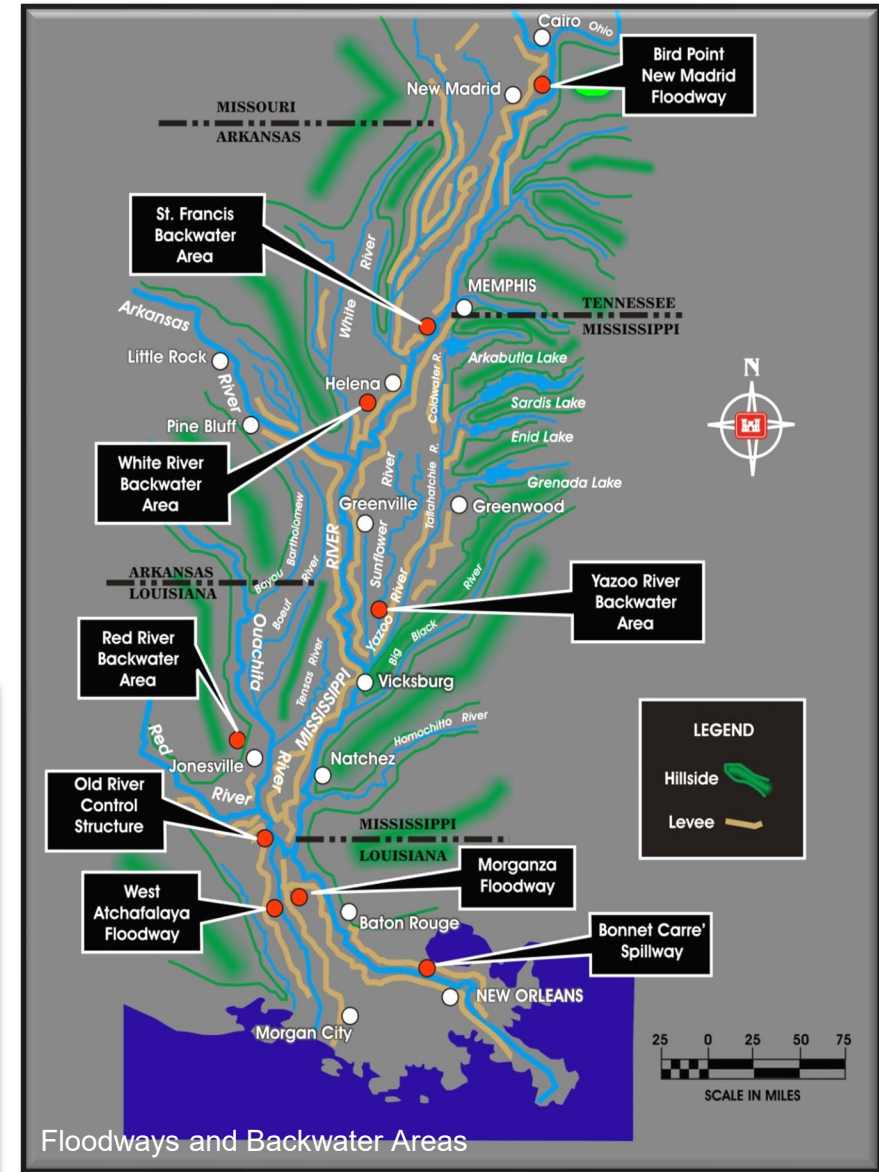
1. Construction of new projects
2. Modifications to existing projects (structurally or operationally)
3. Monitoring of or adaptive management measures for existing projects to respond to changing conditions
4. Improving the efficiency of operational and maintenance dredging within the study area;
5. Whether changes are necessary to the Mississippi River and Tributaries (MR&T) Project within the Study area;
6. Other Federal and non-Federal action, where appropriate
7. Follow-up studies and data collection and monitoring to be carried out by the relevant Federal or State agency



Levee Setback (Source: TNC)

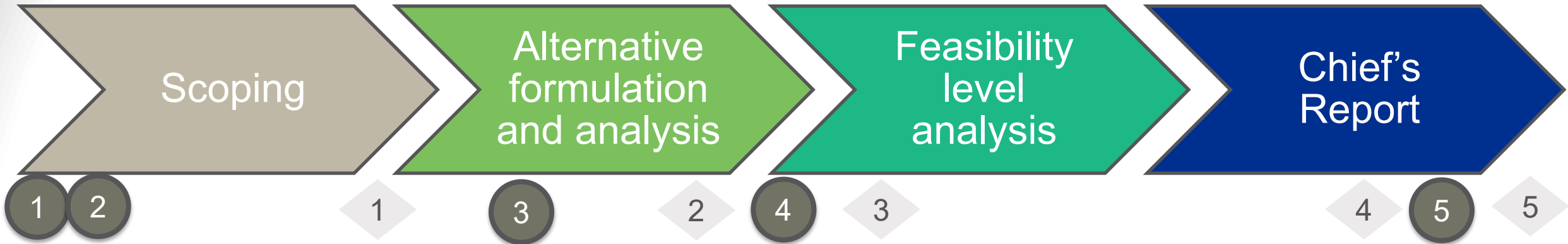


Old River Control Structure





HOW ARE WE CONDUCTING THE STUDY?



Feasibility Study Process

- 1 Alternatives Milestone
- 2 Tentatively Selected Plan Milestone
- 3 Agency Decision Milestone
- 4 State and Agency Review
- 5 Chief of Engineer's Report with Final NEPA Documentation

NEPA Process During Feasibility

- 1 Identify Need for Action
- 2 Begin Scoping
- 3 Begin Drafting NEPA documentation
- 4 Release Draft NEPA documentation for Public, Technical & Policy Review
- 5 Publish and Distribute Final NEPA documentation

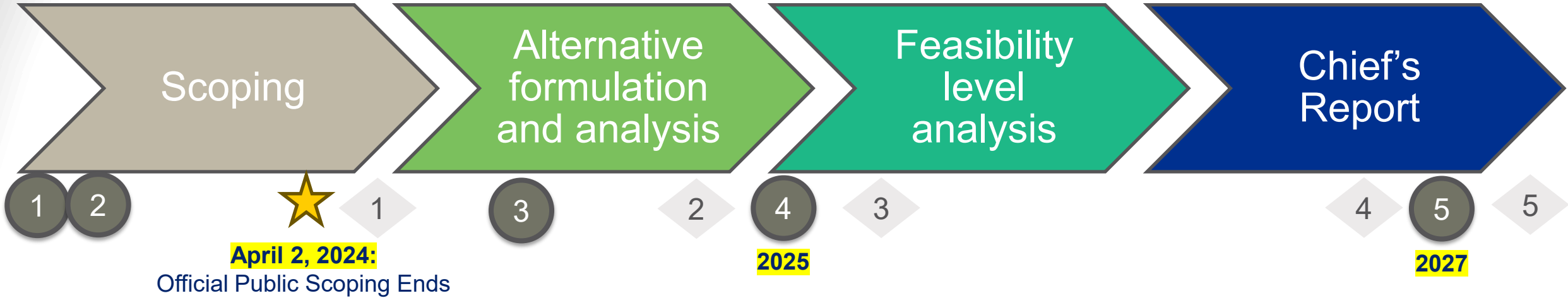


U.S. ARMY



HOW ARE WE CONDUCTING THE STUDY?

We are here



Feasibility Study Process

- 1 Alternatives Milestone
- 2 Tentatively Selected Plan Milestone
- 3 Agency Decision Milestone
- 4 State and Agency Review
- 5 Chief of Engineer's Report with Final NEPA Documentation

NEPA Process During Feasibility

- 1 Identify Need for Action
- 2 Begin Scoping
- 3 Begin Drafting NEPA documentation
- 4 Release Draft NEPA documentation for Public, Technical & Policy Review
- 5 Publish and Distribute Final NEPA documentation



WHAT IS THE NATIONAL ENVIRONMENTAL POLICY ACT?



National Environmental Policy Act (NEPA)

Laws, Executive Orders,

- Clean Water Act
- Endangered Species Act
- Clean Air Act

Policies, and Regulations

- National Historic Preservation Act
- Coastal Zone Management Act

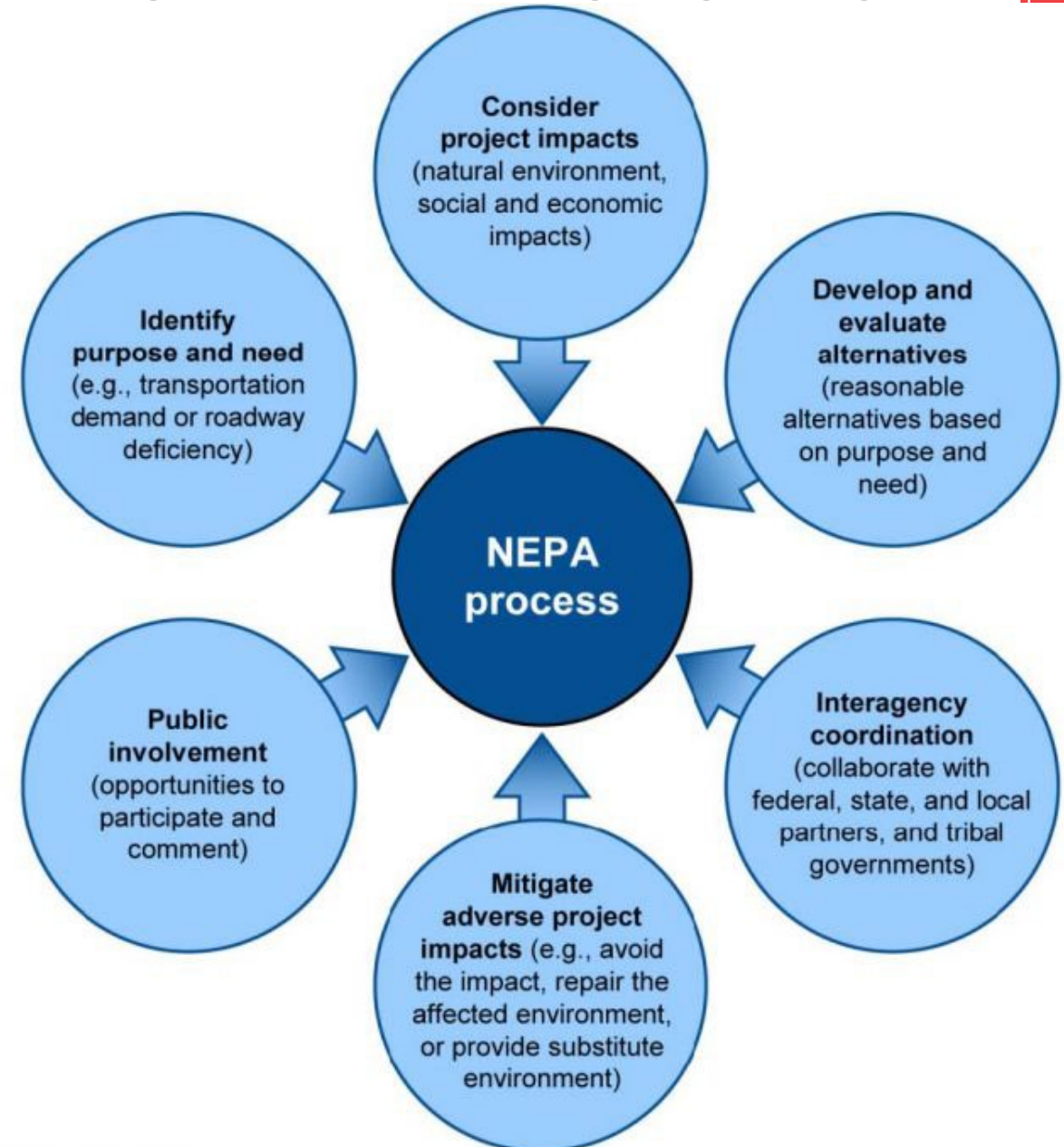
And others...



WHAT IS THE NATIONAL ENVIRONMENTAL POLICY ACT?

Requires all federal agencies to:

- Conduct scoping to identify significant issues that warrant further analysis
- Consider the environmental impacts of potential actions;
- Develop a range of alternatives, including no action;
- Provide opportunities for the public to provide input; and
- Document the decision-making process so that interested and affected stakeholders can understand how the agency came to a decision.





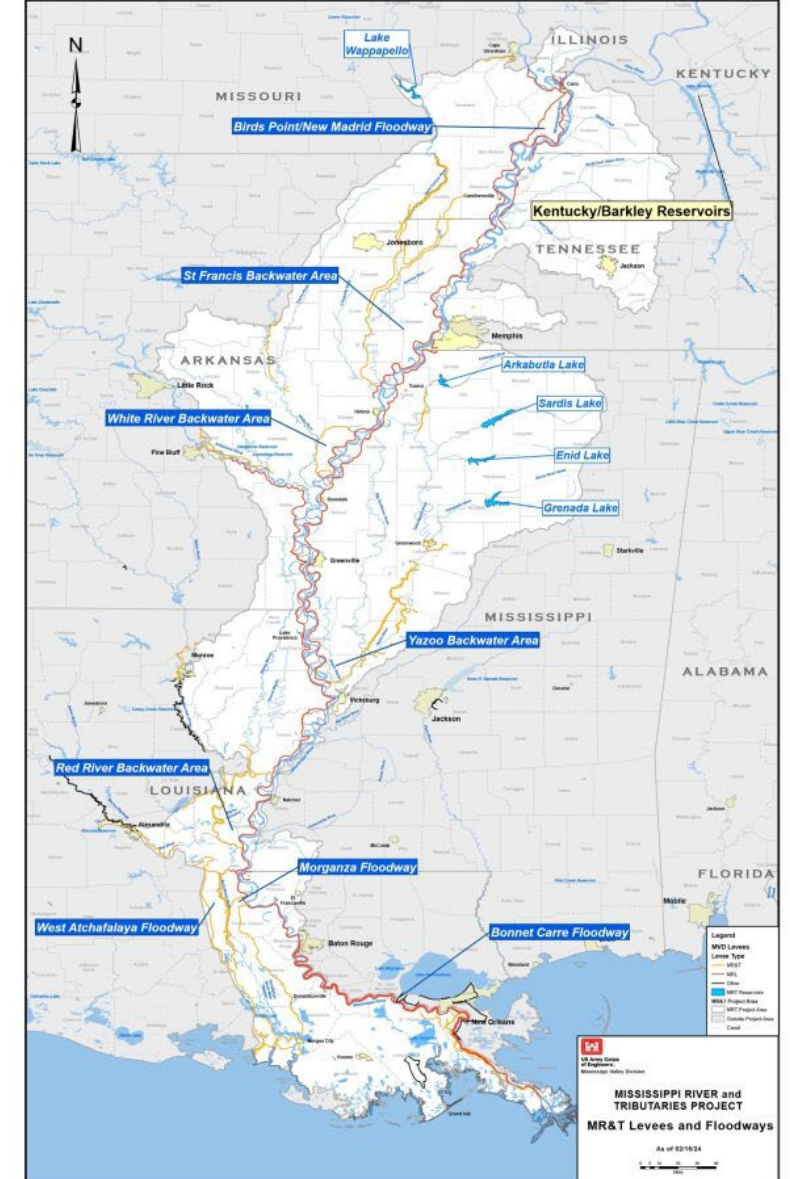
U.S. ARMY

HERE'S WHAT WE'RE THINKING!

12



- Find the right balance of water and sediment throughout the Mississippi River and Tributaries System
- Reconnect the river and the floodplain, where possible, to support ecosystems
- Stabilize channels and improve channel resilience
- Improve economic efficiencies in inland navigation
- Change how we operate existing structures to support multiple purposes, such as flood risk management, ecosystem restoration, and water supply
- Reduce flood risk to economically and socially disadvantaged communities along the Mississippi and Atchafalaya Rivers





U.S. ARMY

HERE ARE SOME OF THE RESOURCES IN THE STUDY AREA

13



- Terrestrial Habitats (Bottomland Hardwoods, Swamp, Marshes, etc.)
- Wildlife Resources
- Aquatic Resources and Fisheries
- Protected, Threatened and Endangered Species
- Groundwater
- Water Quality
- Geology and Soils
- Air Quality to include Greenhouse Gases
- Recreation & Aesthetics
- Cultural, Historic, and Tribal Resources
- Environmental Justice (EJ)
- Socioeconomics

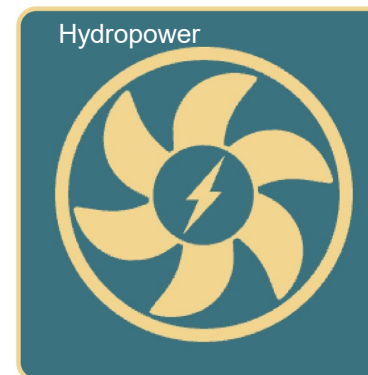
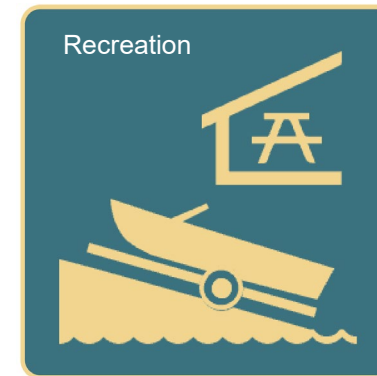


U.S. ARMY

WE WANT YOUR INPUT!



- Where are some of the **PROBLEMS** or **CHALLENGES** on the river?
- What are some **SOLUTIONS** to fix these problems or challenges?
- How can we more **EFFECTIVELY MANAGE** the river and its resources?
- What river management practices would you like to see **EXPANDED**?
- What are your greatest **CONCERNS** about current state of the river?
- What are we **MISSING** and what is it that we don't know?





SUBMIT YOUR COMMENTS



Comment Method

How to Access & Submit

Survey 123 Tool

<https://arcg.is/0OC1DP>



Email

lmrcomp@usace.army.mil

Comment Cards

At Public Meetings

Website

<https://www.mvn.usace.army.mil/About/LMRComp/>

GENERAL INQUIRIES:

Email lmrcomp@usace.army.mil

Public Comment Period Ends April 2nd 2024

THANK YOU



**US Army Corps
of Engineers®**

U.S. ARMY