



U.S. ARMY



US Army Corps  
of Engineers®

# THANK YOU FOR JOINING US

1

Presentation will begin momentarily

Morganza to the Gulf of Mexico, Louisiana

Website: <https://www.mvn.usace.army.mil/About/Projects/Morganza-to-the-Gulf/>

# MORGANZA TO THE GULF OF MEXICO, LOUISIANA

Environmental Justice Outreach  
Meeting

July 19, 2023

Folklife Museum  
Houma, LA



US Army Corps  
of Engineers®

U.S. ARMY



U.S. ARMY

# AGENDA

3



- Meeting Objective
- Environmental Justice Executive Orders
- Project Purpose and Authorization History
- Project Overview
- Federal Work Underway
- Construction & Borrow Overview
- Reach A
- Reach F
- How to Comment



U.S. ARMY

# MEETING OBJECTIVE

4



- The US Army Corps of Engineers (USACE) attended a meeting between the Coastal Protection and Restoration Authority (CPRA) and Governor's Office of Coastal Activities with Coastal Indigenous Communities on Monday, May 9th, 2023, in Montegut, LA.
- Based on input from that meeting, USACE is hosting this meeting to provide information about the Morganza to the Gulf of Mexico Project:
  - To initiate conversations with local communities about Reach A and F construction activities including borrow pits and access.
  - To gather input and concerns from meeting participants to be addressed at any future public meetings.



U.S. ARMY

# ENVIRONMENTAL JUSTICE EXECUTIVE ORDERS

5



## **Executive Order 12898**

Federal Actions to Address Environmental Justice (EJ) in Minority and Low-Income Populations (also referred to as Areas of EJ Concern). (1994)

## **Executive Order 14008**

Tackling the Climate Crises at Home and Abroad”, 2021: Introduces the Justice 40 Initiative, to identify not only health effects of federal actions but also benefits, social and economic.

## **Executive Order 14096**

Revitalizing Our Nation’s Commitment to Environmental Justice for All”, 2023. It is policy to pursue a whole-of-government approach to environmental justice. This order also supplements the foundational efforts of Executive Order 12898 of February 11, 1994 (Federal Actions to Address Environmental Justice in Minority Populations and Low-Income Populations) to address EJ.

An EJ Assessment is provided in the Environmental Analysis document. The Assessment should identify any high, adverse disproportionate impacts from the proposed project to areas of EJ concern.

EJ Public Outreach is performed to inform residents in areas of EJ concern of the project and its potential impacts. Feedback from residents is critical to the process.



U.S. ARMY

# PROJECT PURPOSE AND AUTHORIZATION HISTORY



6

## Project Purpose

Provide hurricane and storm damage risk reduction based on the 100-year level of risk reduction in Terrebonne and Lafourche Parishes to approximately 52,000 structures and a population of 200,000 in an area of intense concentration of energy infrastructure near the confluence of two nationally significant navigation corridors in the Mississippi River and the Gulf Intercostal Water Way (GIWW).

Authorization History	
1992	Study Authorized
WRDA 2007	Construction Authorized (72-mile system)
WRRDA 2014	Reauthorized 2013 (98-mile system)
28 DEC 2021	Project Partnership Agreement signed - USACE, CPRA, and Terrebonne Levee and Conservation District (TLCD)

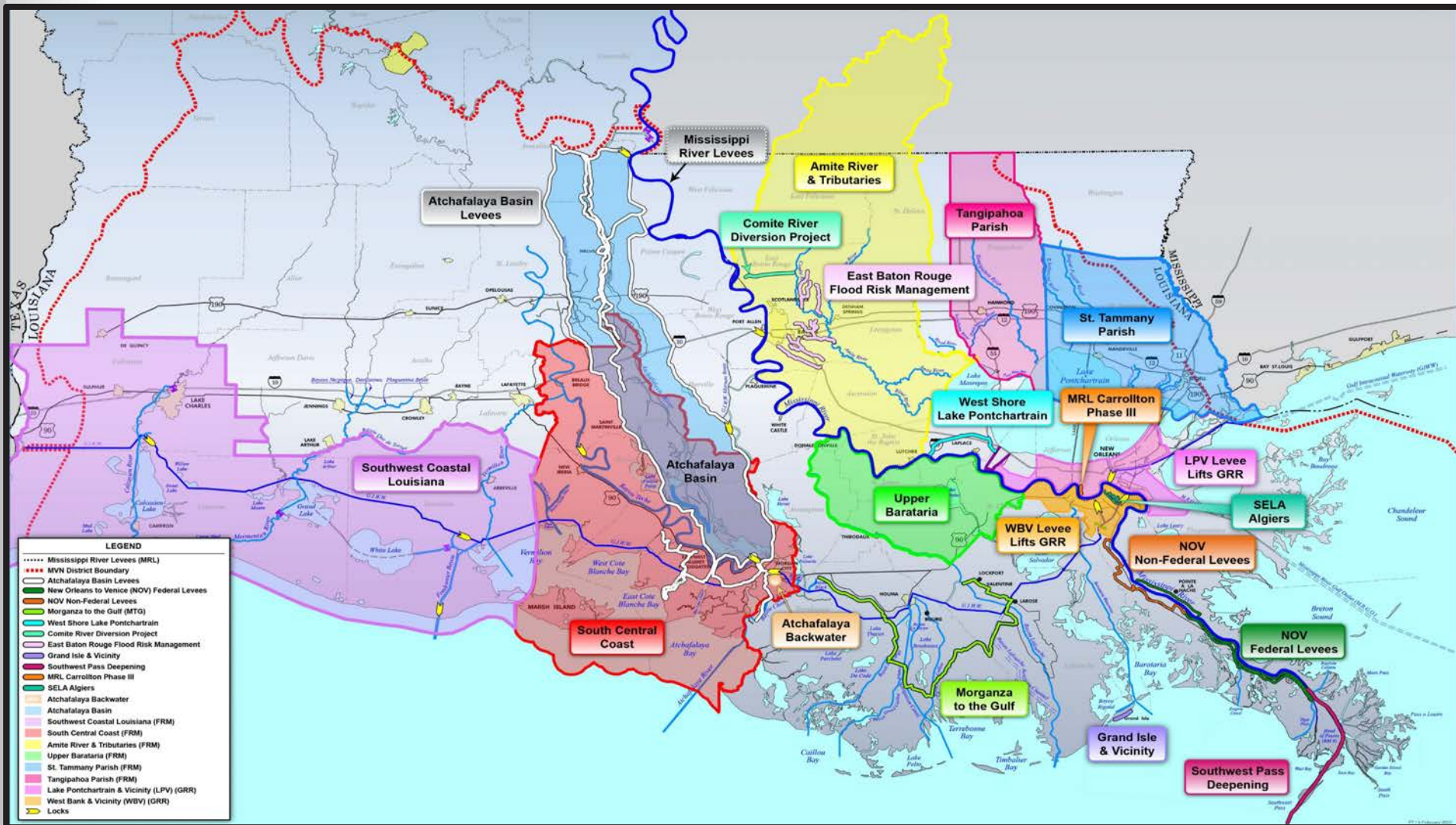




U.S. ARMY

# NEW ORLEANS DISTRICT - PROJECT AND STUDIES

7











U.S. ARMY

# FEDERAL WORK UNDERWAY

9



## Construction Ongoing

- Humble Canal Sector Gate Preload

## Features Funded for Design and Construction

### Levee Features

- Reach A Levee portion
- Lockport to Larose Levee portion

### Structure Features

- Shell Canal Floodgate
- Minors Canal Floodgate
- GIWW West Floodgate
- GIWW East Floodgate
- Humble Canal Floodgate

## Features funded for Design

### Levee Features

- Reach F
- Reach J-2
- Reach L
- Reach K

### Structure Features

- Bayou Terrebonne Floodgate

## Environmental Efforts

- Reach A Environmental Assessment (EA)
- Reach F EA
- Supplemental Environmental Impact Statement (SEIS) — Entire project
- Survey and Borings EA



U.S. ARMY

# CONSTRUCTION & BORROW OVERVIEW

10



## Construction- What to Expect:

- Construction noise
- Road congestion
- **End Goal: Flood risk reduction for the community!**

## Borrow Overview

- Initial Selection
  - Material conditions (soil composition/geology) and proximity to alignment.
- Initial Screening
  - Related to cultural resources, environmental impacts, and underground utility considerations.
- Investigations (currently underway)
  - Related to geotechnical, surveys, environmental, cultural, and hazardous waste.
- Public Comment Period
  - Provides an opportunity for a public meeting and comment period prior to final approval. Any comment periods will be advertised.





U.S. ARMY



# REACH A- UPCOMING WORK

## Description

Reach A is approximately 9 miles of earthen levees southwest of Houma in Terrebonne Parish.

## Design

- Contract 1 (under design)
  - Includes initial 6-7 foot levee lift south of GIWW.
  - Provides initial flood risk reduction in a critical area.
  - Scheduled to be awarded in 2024.
  - Construction anticipated to last 2.5 years.
- Contracts 2 and 3
  - May encompass drainage structures, construction on the Mandalay National Wildlife Refuge South of the GIWW, and final levee lift South of the GIWW.
  - Pending funding.
- Contract 4
  - May encompass construction North of the GIWW.
  - Pending funding.

## Environmental Considerations

- NEPA requirements will be completed before construction.
- The Mandalay National Wildlife Refuge is located South of the GIWW.







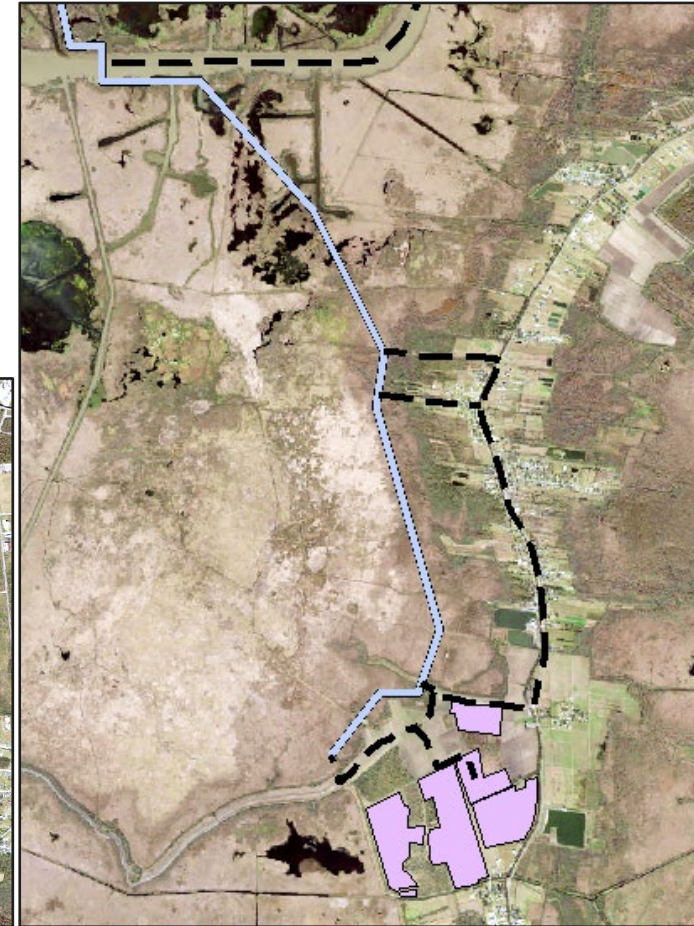
U.S. ARMY

# REACH A – POSSIBLE BORROW LOCATIONS AND HAUL ROUTES

12



- Total borrow to complete all contracts for full levee height: Approx. 3.2M cubic yards.
  - Contract 1: approx. 400,000 cubic yards
- Potential truck and barge haul routes: Hwy 315 and GIWW.



Reach A North

Reach A South

— — — Haul Routes    ——— Reach A Alignment    Possible Borrow Pits



U.S. ARMY



# REACH F- UPCOMING WORK



## Description

Reach F is approximately four miles of earthen levees South-Southwest of Houma in Terrebonne Parish.

## Design

- Levee lift to an approximate elevation of +15.5 feet plus overbuild along the entire length of Reach F.
- Scheduled to be awarded in 2025 (pending receipt of funds).
- Construction estimated to last approx. 2-3 years.

## Environmental Considerations

- Environmental Assessment scheduled to be completed in 2025.





U.S. ARMY

# REACH F- POSSIBLE BORROW LOCATIONS AND HAUL ROUTES

14



- Total borrow for final lift to full levee height: 1.8M cubic yards.
- Potential truck and barge haul routes: Hwy 315 and GIWW.



- Haul Routes
- Reach F Alignment
- Proposed Borrow Pits





U.S. ARMY



# PROJECT WEBSITE

**Morganza to the Gulf of Mexico Project Website:**

**<https://www.mvn.usace.army.mil/About/Projects/Morganza-to-the-Gulf/>**

# HOW TO COMMENT

**Email: [MorganzatotheGulf@usace.army.mil](mailto:MorganzatotheGulf@usace.army.mil)**

**Comment cards are available at the meeting.**

**Cards can also be mailed to:**

CEMVN-PDS  
7400 Leake Avenue  
New Orleans, LA 70118